



PIECO

INTEGRATED POWER SOLUTIONS



Anesthesia Countdown Timer		Time and Date		Elapsed Time	
00 : 05 : 00		19 : 21 : 54		00 : 00 : 11	
START H+ H- M+ M- STOP		Sunday 2017 -06 - 11			
Light controls		Temperature control		Miscellaneous controls	
General Light 1		25 °C 25	UVST Touch phone		
General Light 2			Humidity control 08 % 10		
Surgical Light 1		Pressure Gauges 28 BAR HEPA Filter Status 32 BAR Room Pressure 1.1 BAR Ambient Pressure	D		
Surgical Light 2			1 2 3 4 5 6 7 8 9 * 0 #		
Surgical Light 3			Alarm 		
Plan Air Light		Gas Alarm O2 N2O CO2 Air 4 Bar Air 7 Bar Vaccum			

SMART SURGEON CONTROL PANEL V3.0



NATIONAL AWARDS
FOR EXCELLENCE IN
HEALTHCARE 2017

For Modular Operation Theater

SMART SURGEON CONTROL PANEL

Pieco's Smart Surgeon Control Panel has all controls for modular operation theater which are provided on a single touch screen panel. This is a PLC based electronic control panel. Because of its huge display size and HD Display, visibility of all readings are very clear. Our control panels are also compatible with integration system. All our control panels are CE marked.

FEATURES

- Date & Time - Real time clock
- Operation timing - Elapsed time
- Temperature with set point
- RH with set point
- HEPA Filter Status Indicator
- Audio Alarm
- Hands Free Telephone
- 6- Medical Gas Alarm
- 6- Light Control with dimmer
- Differential Pressure
- Ambient Pressure
- OT Pressure
- OT integration capability
- Music Player
- Startup Logo
- Runtime Logo

FEATURES/OPTION

FEATURES / SCREEN SIZE	MODEL NO			
	PIE-SSCP-20	PIE-SSCP-24	PIE-SSCP-32	PIE-SSCP-40
	20 inches	24 inches	32 inches	40 inches
Date & Time-Real time clock	X	✓	✓	✓
Operation timing-Elapsed time	✓	✓	✓	✓
Anesthesia Countdown Timer	X	X	✓	✓
Temperature with set point	✓	✓	✓	✓
RH with set point	X	✓	✓	✓
Temperature and RH Display	✓	✓	✓	✓
HEPA Filter Status Indicator	✓	✓	✓	✓
Ambient Pressure	✓	✓	✓	✓
OT Pressure	✓	✓	✓	✓
Differential Pressure	X	✓	✓	✓
6-Medical Gas Alarm	✓	✓	✓	✓
6-Light Control with dimmer	✓	✓	✓	✓
Audio Alarm	✓	✓	✓	✓
Modular Phone Capable	✓	✓	✓	✓
Soft Phone	X	✓	✓	✓
Digital Clock	✓	✓	✓	✓
OT Integration Capability	✓	✓	✓	✓
Startup Logo	✓	✓	✓	✓
Runtime Logo	✓	✓	✓	✓
Mp3 Players	X	X	✓	✓
Bluetooth Connectivity	X	X	✓	✓
USB Hot Plug 'n' Play	X	X	✓	✓
Remote/Central Monitoring Capabilities	X	X	✓	✓
Compatible with OT/OR Management System	X	X	✓	✓
Self UV Sterilizing System capable	X	X	✓	✓
Hospital Boot Logo	X	X	✓	✓
PACS PC Capable	X	X	X	✓

HARDWARE SPECIFICATION

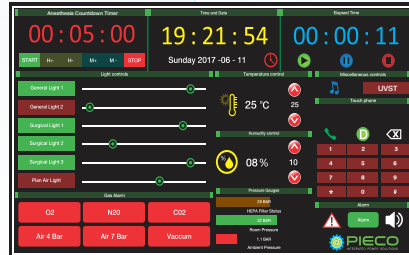
Processor	Broad com Quad-core ARMv8 CPU
OS Type	PIECO KORE 3.0 OS (LINUX)
Power Requirement	AC 100- 240 V, 50/60 Hz
Power Consumption	45 watt
Boot Time	10-30 Sec
OS Crash Protection	Yes
Screen Size	20/24/32/40 Inch
Display Type	LED
Touch Screen	Yes
Touch Type	Infrared based high durability
Refresh Rate	90 Hz
Brightness	400 cd/m ²
Contrast Ratio	3500:01:00 (Static)
Heat Emission	Very Low Fan less operation



DISPLAY MODELS



20 INCH



24 INCH



32 INCH



40 INCH

